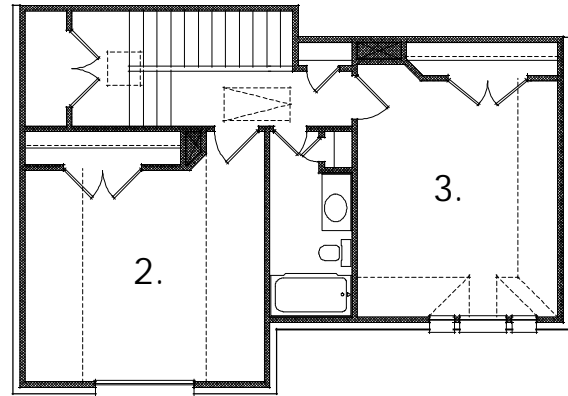


1st Floor



2nd Floor

The Post Oak

For that narrow lot here is a good family home with the option Living/Dining Room serving as an office. The 2nd and 3rd bedrooms are large too.

Specifications

1st floor	1,364
2nd floor	624

Total Living Area 1,988 Sq. Ft.

3 Bedrooms, 2 1/2 Baths, 2 Living Areas
33'-10" Wide x 55'-8" Deep

1st Floor

Living Room/ Dining 11'-0" x 13'-0"

Family Room 13'-8" x 15'-6"

Master Bedroom 14'-6" x 15'-0"

Kitchen 11'-4" x 12'-10"

Breakfast 11'-4" x 9'-0"

2nd Floor

Bedroom #2 14'-6" x 12'-10"

Bedroom #3 12'-2" x 14'-4"



Floor plans & elevations are subject to change and dimensions are approximate. Purchasers are advised consult their state and local building authorities and a state certified architect prior to any construction related to these plans.
© Copyright 1998